

THE COTSWOLDS ART & ANTIQUES DEALERS' ASSOCIATION FAIR

21ST - 24TH FEBRUARY 2019

Thurs to Sun 10am-5.30pm



BLENHEIM PALACE

BLENHEIM PALACE, WOODSTOCK,
OXFORDSHIRE OX20 1PP

Complimentary tickets are available online at
www.thecada.org

T: 07855 443913



Architectural Heritage Stand 22

Alex Puddy
Taddington Manor, Taddington
near Cutsdean, Gloucestershire GL54 5RY
T: +44 (0)1386 584414
E: office@architectural-heritage.co.uk
W: www.architectural-heritage.co.uk

A carved stone niche figure in
the Arts & Crafts style
depicting an allegory of
Autumn, circa 1910



Mark Goodger Stand 15

Mark Goodger
T: +44 (0)1604 863979
M: +44 (0)7779 654879
E: info@hamptonantiques.co.uk
W: www.hamptonantiques.co.uk



Clockwise from top:
Palais Royal tortoiseshell sewing box
with ornate faceted cut decoration steel,
circa 1820

Extremely rare ivory tea caddy adorned with
solid gold faceted studs, circa 1790

Green tortoiseshell tea caddy, attributed to
Lund, circa 1820

Extremely rare ivory ribbed tea caddy with
steel faceted stud decoration, circa 1785

John Howard Stand 20

John Howard
6 Market Place, Woodstock
Oxfordshire OX20 1TA
T: +44 (0)7831 850544
E: john@johnhoward.co.uk
W: www.antiquepottery.co.uk



Mid-18th century Bristol delftware
plate of a pheasant perched on a
gate, 9in diameter.

Newman Fine Art Stand 7

Newman Fine Art
By appointment, Painswick
T: +44 (0)7802 436621
E: derek@newmanfineart.co.uk
W: www.newmanfineart.co.uk



Myles Birket Foster RWS (1825-1899)
'Lechlade on Thames'
Signed with monogram
Watercolour, 14 x 10cm
Exhibited: Leger Galleries, January 1969

Elizabeth Harvey-Lee Stand 3

Elizabeth Harvey-Lee
Dealer in Old Master and
Modern Artists' Prints
1 West Cottages, North Aston
Oxfordshire OX25 5QB
T: +44 (0)1869 347164
E: info@elizabethharvey-lee.com



Robert Austin P.R.E., R.A., P.R.W.S., 'Cat and Mandolin', original engraving, 1925

Howards Stand 21

Howards
44a Wood Street
Stratford-upon-Avon
Warwickshire CV37 6JG
T: +44 (0)1789 205404
E: ian.eves@btconnect.com
W: www.howardsjewellers.com



A fine plique-à-jour diamond
set brooch pendant, French,
circa 1900

Strachan Fine Art Stand 12

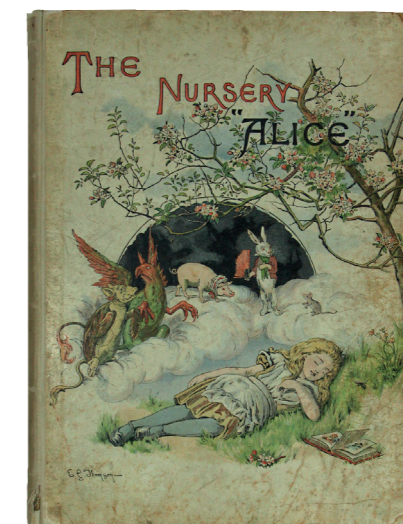
Russell Strachan
T: +44 (0)20 79382622
M: +44 (0)7860 579126
E: russell@strachanfineart.com
W: www.strachanfineart.com



Lucien Lévy-Dhurmer, 1865
(Algiers)-1953 (Le Vésinet)
Baigneuses sous la treille c. 1900,
oil on canvas, 61x50cm.

Temple Rare Books & Temple Bookbinders Ltd Stand M4

Temple Rare Books
Paternoster Farm, 107 Cassington Road
Yarnton, Oxford OX5 1QB
T/F: +44 (0)1865 451940
E: books@templerarebooks.com
W: www.templerarebooks.com



Carroll, Lewis. The Nursery Alice.
Illustrated by Tenniel, John and
Thomson, E. Gertrude.
London: Macmillan and Co., 1890.
Presentation copy from the author to
the dedicatee. Original quarter cloth
and decorated boards. Inscribed by
Carroll, in his usual purple ink to half
title, 'Marie van der Gucht with the
author's love. Mar. 25, 1890'.
Marie van der Gucht is the dedicatee
in the book, with the second letters
of each line of the dedicatory verses
'A Nursery Darling', spelling out
her name
£26,000.00



Complimentary tickets covering admission to
the grounds and the fair are available online at:

www.thecada.org

Thursday 21st February 10am-5.30pm
Friday 22nd February 10am-5.30pm
Saturday 23rd February 10am-5.30pm
Sunday 24th February 10am-5.30pm

Thursday 21st February 10am-5.30pm
Friday 22nd February 10am-5.30pm
Saturday 23rd February 10am-5.30pm
Sunday 24th February 10am-5.30pm

Complimentary tickets covering admission to
the grounds and the fair are available online at:

www.thecada.org

